



# Aghadoe Heights

HOTEL AND SPA



A Haven of Inspiration

# Contents

Page 3	Hotel Overview
Page 4	Conference and Meeting Facilities
Page 12	Dining
Page 16	The Spa
Page 18	Team Building and Nearby Activities
Page 22	Accolades

## Welcome to Aghadoe Heights Hotel & Spa

A 5\* luxury resort, located just a few minutes from Killarney town in the South West of Ireland. Nestled on the hillside with uncompromised views of the Lakes of Killarney and Ireland's highest mountain range, The Aghadoe Heights Hotel & Spa offers a discreet venue for all occasions.

A dedicated team with decades of experience and expertly lead, will ensure that every corporate event, group gathering and incentive itinerary is executed with precision and ensure that each and every guest enjoys a truly memorable experience.

GPS Co-ordinates: N5204.36 W0933.27

Location	Drive Time (approx.)	Distance Kilometres	Distance Miles
Killarney Rail Station/Town	6 min	6 km	3 miles
Kerry Airport (KIR)	20 min	17 km	11 miles
Cork Airport (ORK)	80 min	90 km	56 miles
Shannon Airport (SNN)	1hr 45 min	135 km	84 miles
Dublin Airport (DUB)	3hr 30 min	313 km	194 miles
Killarney Golf & Fishing Club	5 min	4 km	2 miles
Dooks Golf Club	33 min	30 km	19 miles
Tralee Golf Club	55 min	47 km	29 miles
Ballybunion Golf Club	60 min	65 km	40 miles
Waterville Golf Club	60 min	58 km	36 miles
Old Head of Kinsale Golf Club	1hr 50 min	105 km	65 miles
Lahinch Golf Club	2hr 20 min	177 km	110 miles



## Hotel Facilities

The Garden Room – 120 seat conference room

The Lake Room – 190 seat restaurant

The Executive Boardroom – 14 seat boardroom

The Penthouse – Multipurpose venue seating up to 50 guests

The Terrace Bar – Private receptions for up to 80 guests

The Heights Lounge and Piano Bar

Business Centre

The Spa at The Heights – 9 treatment rooms and extensive Thermal Suite



## Hotel Facilities

74 Guestrooms and Suites

3000sq ft Penthouse Suite – two bedrooms

Complimentary WiFi

Indoor Heated Pool

Jacuzzi

Gym

Hair Salon

Drying Room – golfing/fishing/walking wet gear

Tennis Court

Helipad

Complimentary Car/Coach Parking



# Business Facilities

## The Garden Room

Flooded with natural daylight and with a private entrance, The Garden Room at Aghadoe Heights Hotel and Spa offers up to 120 delegates spacious and comfortable surroundings.

Complete with WiFi, air conditioning and an option to divide the space in two, The Garden Room can be customized to accommodate every form of business event. Let our planning team assist with lunches, breaks and any further entertainment to get the most from your working time away.

## Facilities Include

- Natural Daylight
- Complimentary WiFi
- Air conditioning
- Blackout blinds
- 7ft Projector screen
- 42in LCD Screen
- Automated Projector
- 5 x Double Power Outlets
- 8 x ISDN Sockets (request connection)
- Flip Chart and Markers
- Private Balcony
- Video Conferencing on Request



## The Executive Boardroom

Comfortably seating up to 14 delegates around a custom designed cherry wood table. The room offers an abundance of natural light and complimentary WiFi. The boardroom is the ideal venue for off-site meetings, training sessions or presentations. Our event planning team will ensure your visit to Aghadoe Heights exceeds all expectations.

## Facilities Include

- 14 Seat Boardroom Table | Natural Daylight | Complimentary WiFi
- 50in Wall-mounted Flat Screen | Air Conditioning | Blackout Blinds
- Telephone Point | Flip Chart and Markers

## Room Dimensions & Capacity

Rooms	Theatre	Classroom	U -Shape	Boardroom	Banquet	Cocktail
Garden Room Suite (121m <sup>2</sup> )	120	70	40	40	80	120
Executive Boardroom (56m <sup>2</sup> )	*	-	-	14	-	*
Garden Room (I) (74m <sup>2</sup> )	50	30	20	20	40	60
Garden Room (II) (50m <sup>2</sup> )	30	20	15	12	25	40
The Penthouse (278m <sup>2</sup> )	*	*	20	22	50	60

\* These room capacities can be organised on request and tailored to suit your group requirements

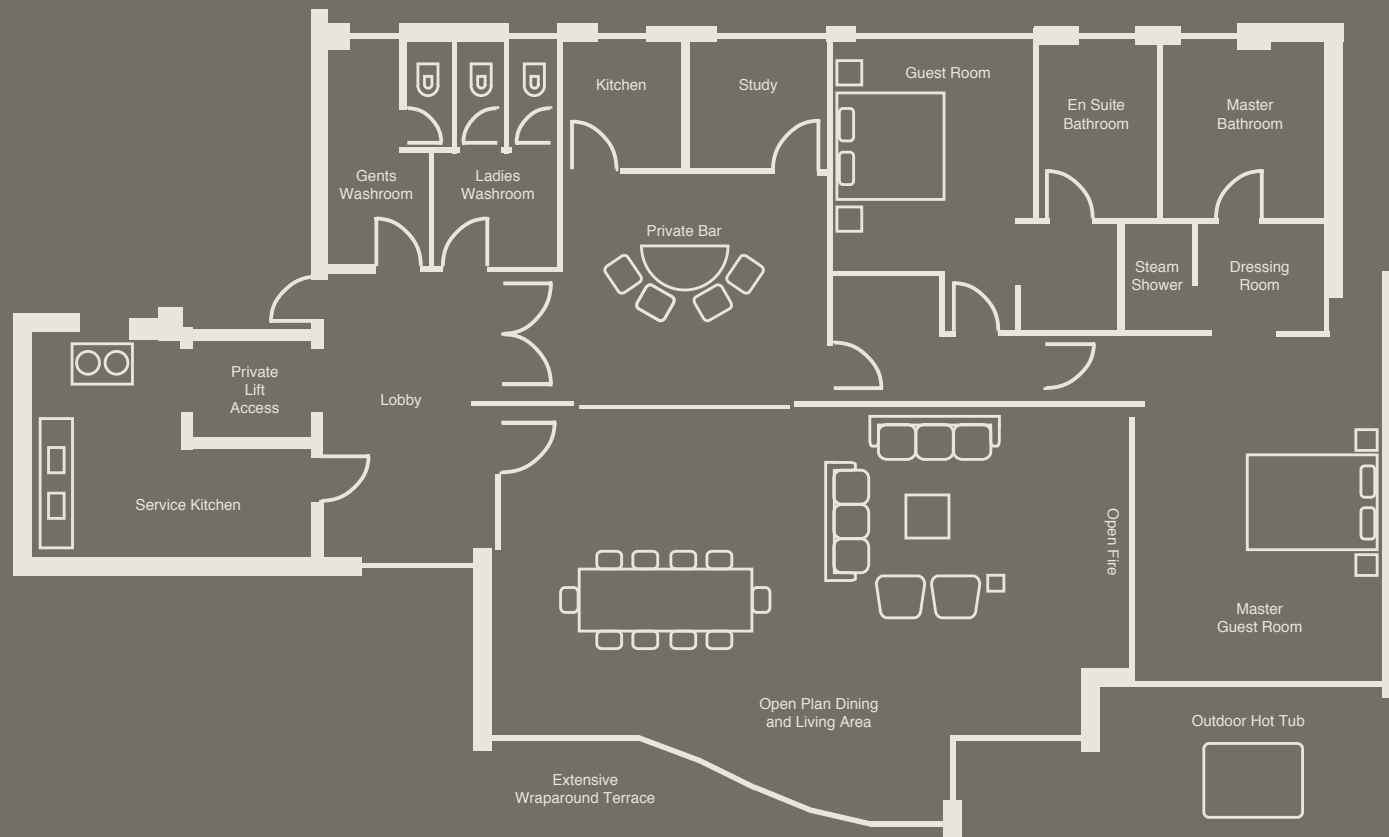


## The Penthouse

Aghadoe's penthouse is possibly Ireland's most beautiful boardroom with wall-to-ceiling windows looking out on to uninterrupted views of the mountains and Lakes of Killarney. It spans 3,000 square feet on the private fifth floor and is totally self-contained, from its own attended bar, to an exclusive business centre.

The Penthouse is ideal for incentive events, executive meetings, private dinners (indoor, or on the extensive terrace), cocktail parties, bespoke fashion shows and memorable launch events in numbers that range up to 60, depending on requirements.





## Penthouse Facilities Include

- Two Bedrooms (separate from entertainment areas)
- Private Lift Access
- Complimentary WiFi
- Private Bar with Draft on Tap
- Large Open-Plan Living Area
- Boardroom/Banquet Table for 22 Guests
- 8ft Cinema Screen for Presentations
- Automated Blackout Blinds
- Built-in Projector
- Wrap Around Terrace
- Ladies and Gents Restrooms
- Outdoor Hot Tub
- Private Study
- Butler's Kitchen (for guest use)
- Catering Kitchen (for professional use)
- Surround Sound Audio Equipment





## Dining

### The Lake Room Restaurant

Fine dining, a warm atmosphere, discreet service and phenomenal views are only part of what make dining at The Lake Room such a wonderful experience. Seating up to 190 guests, this split-level restaurant is the ideal venue for gala dinners and banquets.

### The Lake Room Restaurant Semi Private Dining

The Lake Room Restaurant also boasts a small semi-private dining area, ideal for small groups wishing to take advantage of a little privacy. The table is alongside the floor to ceiling restaurant windows, offering spectacular lake views.

### Private Dining in The Garden Room

This banqueting suite is transformed into a beautiful soft setting for your private dining experience. The Garden Room can seat up to 80 guests and has a private bar. With a few simple table adjustments after dinner, a dance floor can be created to enjoy the rest of the evening.





### Private Dining in The Penthouse

The Penthouse is the most beautiful setting for private group dinners. The suite offers unrivalled views of the lakes and mountains with a wrap-around terrace, which is ideal for BBQ's or pre-dinner canapés. Inside, the central table seats up to 22 guests and the suite offers a full private bar with beer on tap.

### Terrace BBQ's

BBQ's are a wonderful gathering for groups who are looking for a relaxed and informal get-together without foregoing the 5 star touches. A wide menu variety is available and guests can mingle on the terrace, enjoying the spectacular views while our team of chefs put on a fabulous display. The terrace also has a full service bar with indoor seating available.

### The Heights Lounge & Piano Bar

With panoramic views of Killarney's lakes and mountains this is the ultimate all day casual dining option. Combining five star elegance with a comfortable, relaxed atmosphere, The Heights Lounge and Piano Bar is the ideal setting for casual light bites, traditional afternoon tea or evening cocktails and nibbles.



Acharos Heights  
HOTEL & SPA





## The Spa at Aghadoe

The VOYA concept spa is a luxury award-winning haven with 9 treatment rooms, including a couples treatment room, thermal suite and relaxation area. Our highly trained therapists offer a full range of holistic body treatments, wraps and massages as well as a vast range of luxurious beauty treatments. The spa is an idyllic part of any stay at the hotel and packages can be tailored to the groups needs.

## The Thermal Suite

Intense relaxation in heated cabins and multi sensory showers. This suite is based on the ancient ritual of bathing where the body is warmed and then cooled by a series of heat and cooling experiences.

Lanconium – Gentle dry warm air

Hamam – Aromatic warm steam

Aroma Grotto – Gentle steam infused with fragrant aromas

Rock Sauna – Traditional dry air sauna

Tropical Rain Shower – Stimulates tropical rain

Aghadoe Hill Mist Shower – Gentle cooling mist

Deluge Shower – Cascading surge of cool water





## Team Building & Activities in the Area

Killarney is a spectacular location with so much to do right on your doorstep. The Aghadoe Heights Hotel & Spa overlooks 25,000 acres of national parkland and lakes, with Ireland's highest mountain range as the backdrop.

**Golfing** - The hotel lies adjacent to two championship golf courses at Killarney Golf & Fishing Club, home to the Irish Open 2010 & 2011. Other golf courses in the area include Ballybunion, Waterville, Tralee, Dooks and Beaufort, to name but a few.

**Hill Walking / Mountain Climbing** - Tailored to suit all levels of fitness with private guides.

**Horse Riding** - Guided treks through the Killarney National Park or gallop the coastline on one of Kerry's famous beaches.

**Kayaking** - Enjoy spectacular scenery on the Lakes of Killarney.

**Cycle Tours** - A range of guided cycle tours to suit all levels of fitness.

**Fishing** - Lake and river fishing with private ghillie (let our Chef prepare your catch)

**Rock Climbing, Zip Lining & Abseiling** - A fantastic 'team-building' event requiring a lot of team work and camaraderie.

**Falconry** - Can be arranged in the nearby vicinity.

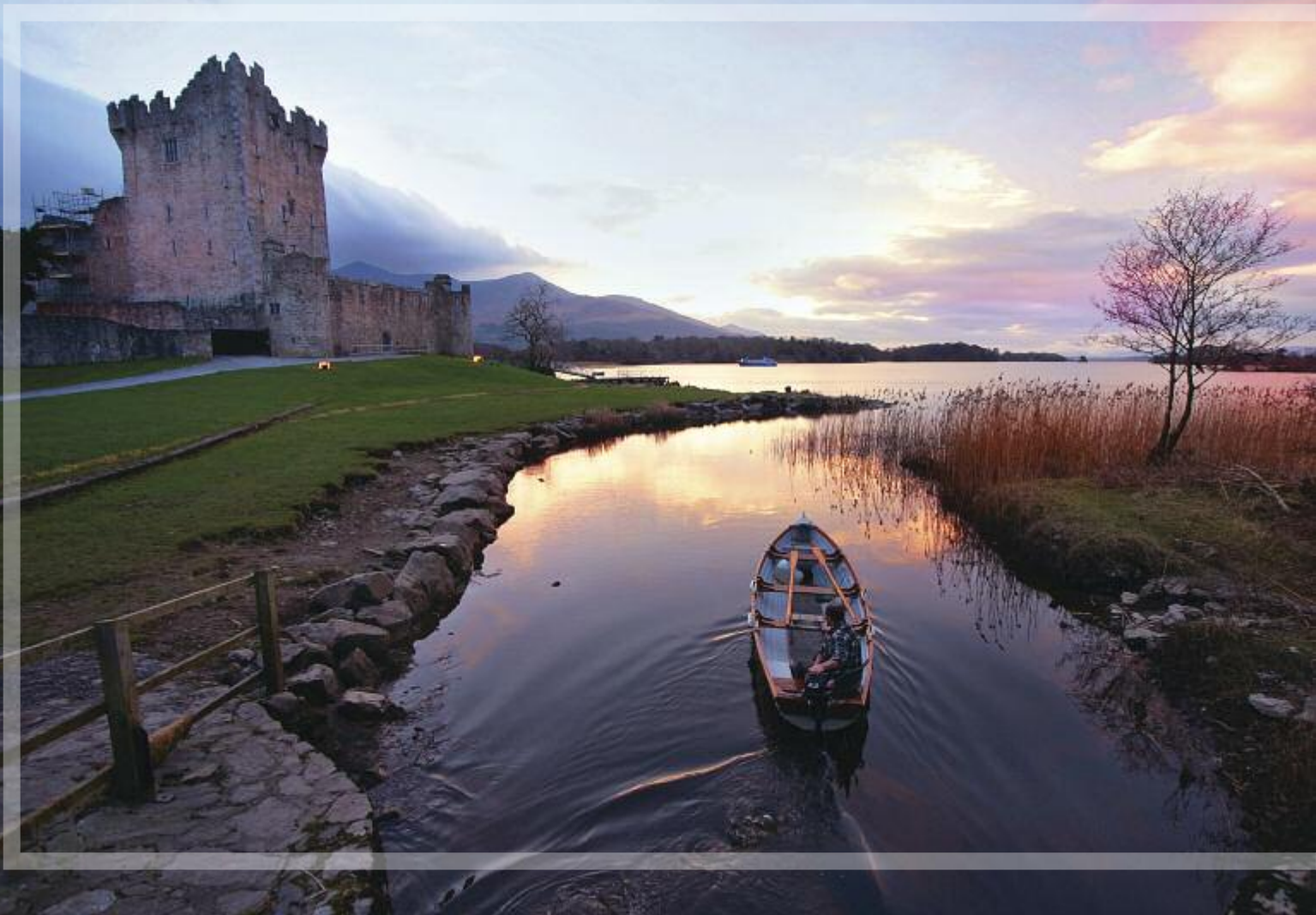
**Cooking** - Learn the art of traditional Irish cooking.

**Clay Pigeon Shooting** - Can be arranged for small and large groups.

**Treasure Hunts** - Use the 25,000 acre National Park as your playground.







## Day Trips

### The Gap of Dunloe Trip

A spectacular day trip, which includes a jaunting cart or horseback ride through an ancient glacial valley with spectacular scenery. Enjoy a lunch stop on the lakes edge and then take a boat ride across the three Lakes of Killarney to Ross Castle.

### Boat trip to Skellig Michael

A short boat trip on the Atlantic Ocean to this UNESCO World Heritage site reveals an ancient monastery on a rocky outcrop off the coast of Kerry with an extremely interesting and spiritual history.

### Dingle Day Trip

Visit the scenic coastal town of Dingle which is home to the world famous dolphin, 'Fungie'. The Dingle Peninsula has an abundance of local craft studios, artisan food producers and wonderful micro-breweries and distillers.

### Ring of Kerry

This is one of the world's most beautiful scenic routes with spectacular mountains, lakes, forests and coastal views.

### Climb Corrán Tuathail

Ireland's highest mountain is on your doorstep. A great challenge for anyone visiting the area and expertly guided walking tours will take you to the very top.

### History and Archaeology Tours

An ideal way to learn about the human history of the surrounding land. Trips are tailored to suit group sizes and personal interests.

# Accolades

Fantastic attention to detail - recipients of many national & international awards such as:

Condé Nast Traveler Reader's Choice Award – Top 30 Resorts in Europe 2015

Irish Tatler Spa Award – Best Specialised Treatment 2015

Best Luxury Wellness Spa – Europe in the 2015 World Luxury Spa Awards

Gold Medal Awards, People Awards Front of House Winner 2014

Gold Medal Awards, Best 5\* Hotel Winner 2014

Irish Tatler Spa Awards - Hotel Spa of the Year, 2014/2013

Irish Tatler Spa Awards - Irish Tatler Spa of the Year, 2013

Irish Tatler Spa Award - Best Treatment Award, 2014/2013

TripAdvisor Travellers Choice Awards 2014/2013/2012

Irish Tatler Spa Awards - Therapist of the Year, 2012

Irish Tatler Spa Awards - Best Service, 2010/2009

IBPA Therapist of the Year, 2008/2007

IBPA Best Hotel Resort Spa of the Year, 2008

IBPA Destination/Resort Spa of the Year, 2006

IBPA New Destination Spa of the Year, 2005

Georgina Campbell's Hotel of the Year, 2005

IGTOA Golf Hotel of the Year, 2004

AA Hotel of the Year 2002/2001

Travel and Leisure Top 50 Most Romantic Places in the World



Aghadoe Heights Hotel & Spa  
Lakes of Killarney, Killarney, Co. Kerry V93 DH59

t: +353 64 6631766

e: [info@aghadoeheights.com](mailto:info@aghadoeheights.com)

[www.aghadoeheights.com](http://www.aghadoeheights.com)

